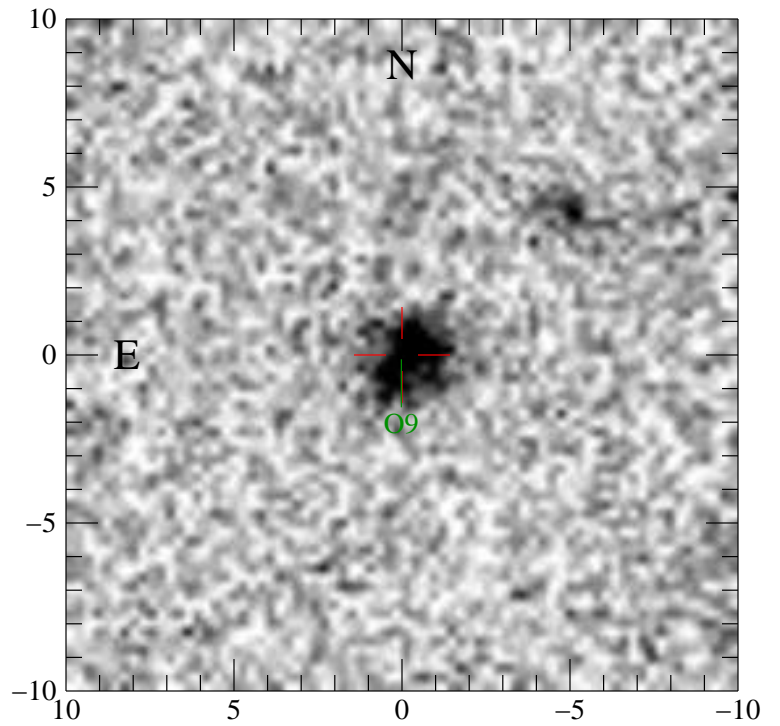
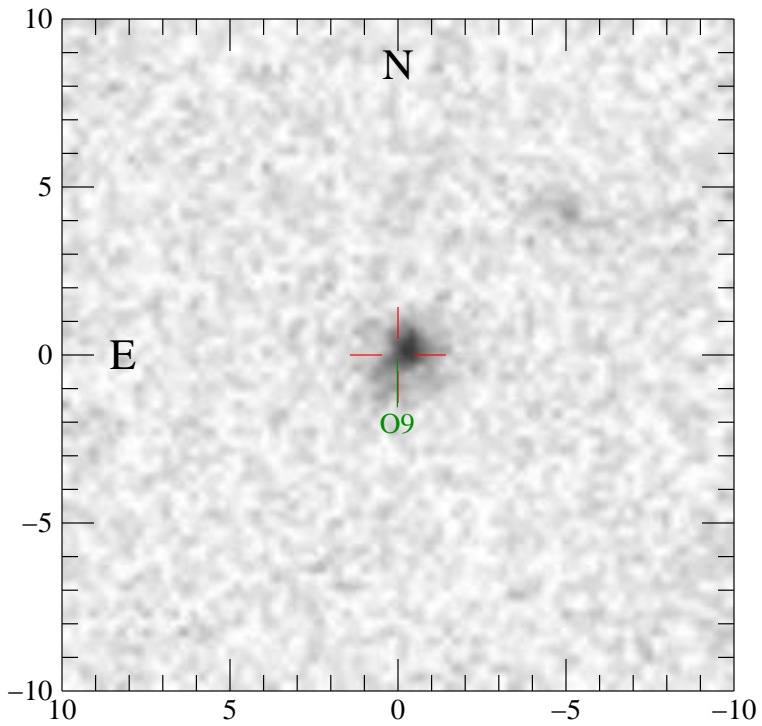
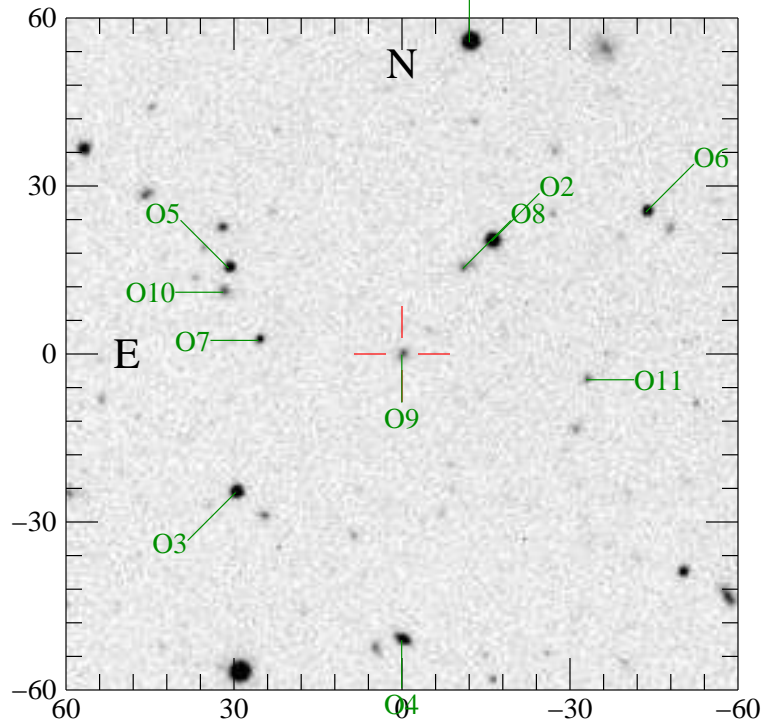
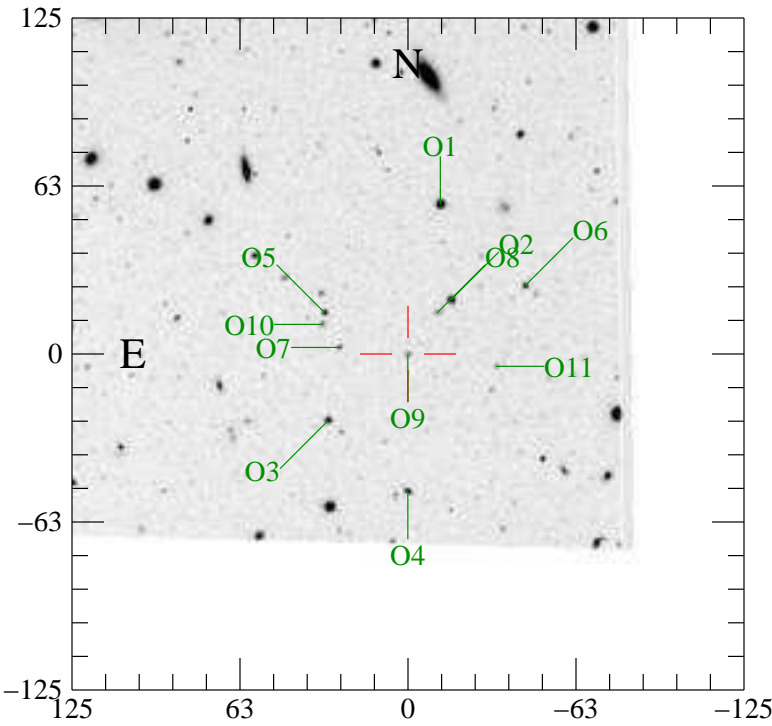


wcc9.061217_0231.109_8.sw: 02:04:14.170 -04:40:18.66 2006-R-322



Offsets from Object to Transient

| Obj | RA (J2000) | Dec | dE(") | dN(") | r(") | PA | m(I) |
|------|--------------|--------------|--------|--------|------|--------|-------|
| Tran | 02:04:14.170 | -04:40:18.66 | 0.00 | 0.00 | 0.0 | 0.0 | 0.00 |
| O1 | 02:04:13.366 | -04:39:23.03 | 12.02 | -55.63 | 56.9 | 167.8 | 17.90 |
| O2 | 02:04:13.102 | -04:39:58.56 | 15.97 | -20.10 | 25.7 | 141.5 | 18.80 |
| O3 | 02:04:16.156 | -04:40:43.43 | -29.69 | 24.77 | 38.7 | -50.2 | 19.40 |
| O4 | 02:04:14.173 | -04:41:09.77 | -0.04 | 51.11 | 51.1 | -0.1 | 20.30 |
| O5 | 02:04:16.241 | -04:40:03.36 | -30.96 | -15.30 | 34.5 | -116.3 | 20.40 |
| O6 | 02:04:11.258 | -04:39:53.33 | 43.53 | -25.33 | 50.4 | 120.2 | 20.40 |
| O7 | 02:04:15.883 | -04:40:16.24 | -25.61 | -2.42 | 25.7 | -95.4 | 21.30 |
| O8 | 02:04:13.444 | -04:40:03.41 | 10.85 | -15.25 | 18.7 | 144.6 | 21.40 |
| O9 | 02:04:14.171 | -04:40:18.79 | -0.02 | 0.13 | 0.1 | -7.1 | 21.40 |
| O10 | 02:04:16.304 | -04:40:07.66 | -31.90 | -11.00 | 33.8 | -109.0 | 21.40 |
| O11 | 02:04:11.970 | -04:40:23.26 | 32.89 | 4.60 | 33.2 | 82.0 | 22.10 |